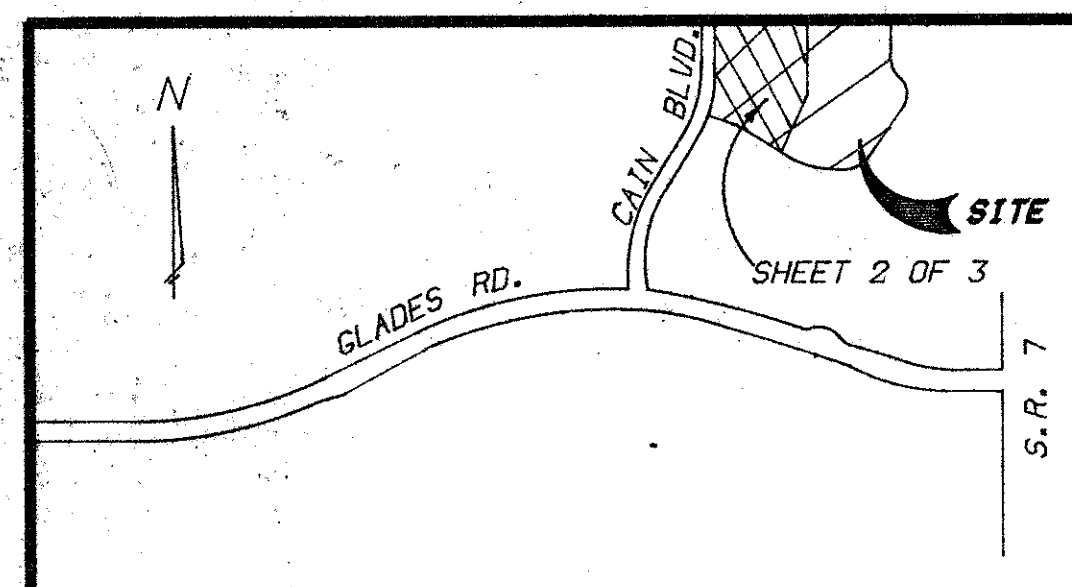


54/158

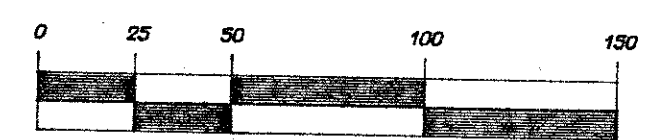
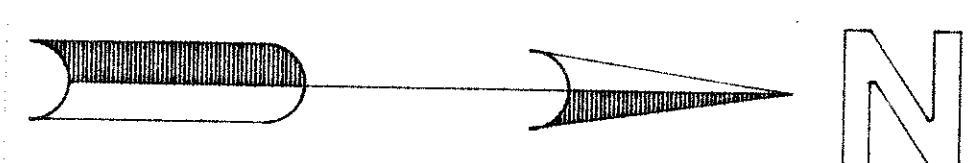
PLAN HOLD CORPORATION • IRVINE, CALIFORNIA
REGISTERED NUMBER 07548



TRACT D

A REPLAT OF ALL OF TRACT D OF THE PLAT OF MISSION BAY, A P.U.D., AS RECORDED IN PLAT BOOK 53, PAGES 112-120 OF THE PUBLIC RECORDS OF PALM BEACH COUNTY, FLORIDA SECTION 13, TOWNSHIP 47 SOUTH, RANGE 41 EAST

SHEET 2 OF 3 MARCH, 1986



SCALE: 1" = 50'

13/47/41

SUBDIVISION	Tract D
BOOK	53
FLOOD ZONE	155
QUAD	68
SE	23/134
PUD NAME	

158

KEY MAP
N.T.S.

DRAWING NUMBER

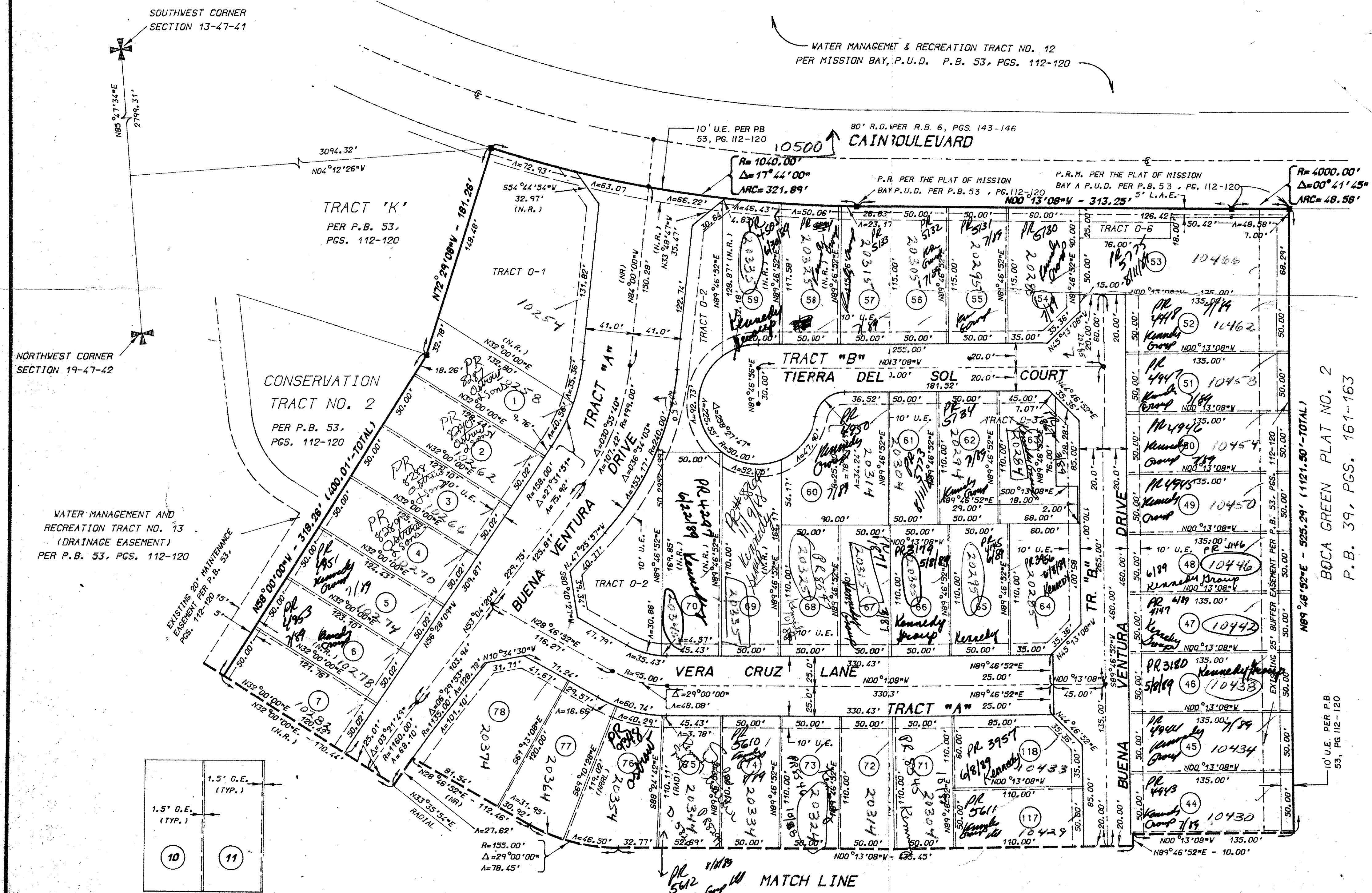
DRAWING NUMBER

DRAWING NUMBER

PLAN HOLD CORPORATION • IRVINE, CALIFORNIA
REGISTERED NUMBER 07548

PLAN HOLD CORPORATION • IRVINE, CALIFORNIA
REGISTERED NUMBER 07548

PLAN HOLD CORPORATION • IRVINE, CALIFORNIA
REGISTERED NUMBER 07548



SURVEYOR'S NOTES

- 1) ALL PRM'S BEAR THE REGISTRATION NUMBER 3143 AND ARE SHOWN THUS - ■
- 2) ALL PCP'S (PERMANENT CONTROL POINTS) ARE SHOWN THUS - ●
- 3) THE BEARINGS SHOWN HEREON ARE BASED ON A BEARING OF N00°54'39"W ON THE EAST LINE OF SECTION 13-47-41.
- 4) ROADWAYS WITHIN THE PLAT OF FLORIDA FRUIT LANDS COMMERCIAL SUBDIVISION NO. 2 OF SECTION 13-47-41 WERE ABANDONED BY RESOLUTION NO. R-84-1932, AS RECORDED IN BOOK 4438, PAGES 1770-1773, PUBLIC RECORDS OF PALM BEACH COUNTY, FLORIDA.
- 5) NO BUILDINGS OR ANY KIND OF CONSTRUCTION SHALL BE PLACED ON UTILITY OR DRAINAGE EASEMENTS.
- 6) THERE SHALL BE NO TREES OR SHRUBS PLACED ON UTILITY EASEMENTS WHICH ARE PROVIDED FOR WATER AND SEWER USE OR UPON DRAINAGE EASEMENTS.
- 7) LANDSCAPING ON OTHER UTILITY EASEMENTS SHALL BE ALLOWED ONLY AFTER CONSENT OF ALL UTILITY COMPANIES OCCUPYING SAME.
- 8) (RAD) - INDICATES RADIAL LOT LINE.
- 9) (NR) - INDICATES NON-RADIAL LOT LINE.
- 10) (NRRL) - INDICATES LOT LINE NON-RADIAL TO REAR LOT LINE.
- 11) (NRFL) - INDICATES LOT LINE NON-RADIAL TO FRONT LOT LINE.
- 12) Δ - INDICATES CENTRAL ANGLE.
- 13) A - INDICATES ARC DISTANCE.
- 14) R - INDICATES RADIUS.
- 15) O.E. - INDICATES OVERHANG EASEMENT.
- 16) U.E. - INDICATES UTILITY EASEMENT.
- 17) D.E. - INDICATES DRAINAGE EASEMENT.
- 18) L.A.E. - INDICATES LIMITED ACCESS EASEMENT.



0454-303

THIS INSTRUMENT PREPARED BY
LEO E. NOBLE P.L.S. 3143 STATE OF FLORIDA

LAWSON, NOBLE & ASSOCIATES, INC.

ENGINEERS PLANNERS TESTERS SURVEYORS
BOYNTON BEACH, FLORIDA

TRACT D REPLAT 54/158

30109 751110902